

EOS CobaltChrome MP1  
for EOS M 100

# EOS CobaltChrome MP1

## EOS M 100 | 30 $\mu\text{m}$

EOS CobaltChrome MP1 conforms to chemical composition UNS R31538. Parts built can be machined, welded, polished and coated as required. They are suitable for a wide variety of applications. EOS CobaltChrome MP1 is a cobalt-chrome-molybdenum-based superalloy powder intended for manufacturing parts on EOS metal systems with EOS DMLS processes.



### Main Characteristics

- High carbon CoCrMo based superalloy
- Good corrosion and wear resistance
- Good mechanical properties

### Typical Applications

- Orthopedic implants
- Gas turbines
- Engine components
- Jewelry

### Headquarters

EOS GmbH  
Electro Optical Systems  
Robert-Stirling-Ring 1  
D-82152 Krailling/Munich  
Germany  
Phone +49 89 893 36-0  
info@eos.info

www.eos.info

**in** EOS

**tw** EOSGmbH

**yt** EOSGmbH

#responsiblemanufacturing

#futureisadditive

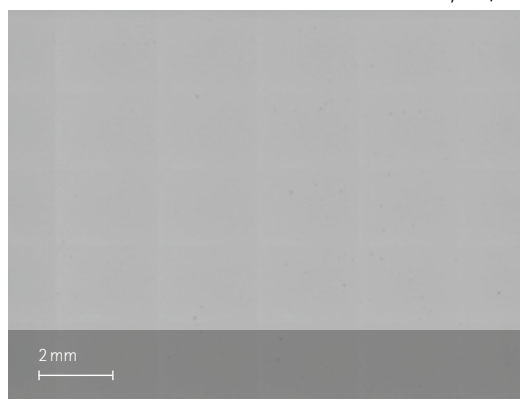
### Product Information

Current TRL	3
DMLS System	EOS M 100
Material	EOS CobaltChrome MP1
Process	CoCr_030_100 M100

### Layer thickness 30 $\mu\text{m}$

Volume rate 1.5  $\text{mm}^3/\text{s}$

Porosity <0,2 %



### Further Offices

EOS France  
Phone +33 437 497 676

EOS Greater China  
Phone +86 21 602 307 00

EOS India  
Phone +91 443 964 8000

EOS Italy  
Phone +39 023 340 1659

EOS Japan  
Phone +81 45 670 0250

EOS Korea  
Phone +82 2 6330 5800

EOS Nordic & Baltic  
Phone +46 31 760 4640

EOS North America  
Phone +1 877 388 7916

EOS Singapore  
Phone +65 6430 0463

EOS UK  
Phone +44 1926 675 110

### Typical part properties<sup>1</sup>

	Yield strength $R_{p0.2}$ [MPa]	Tensile strength $R_m$ [MPa]	Elongation at break A [%]
As manufactured vertical	830	1200	13
As manufactured horizontal	1040	1340	11

<sup>1</sup> Part properties are provided for information purposes only and EOS makes no representation or warranty, and disclaims any liability, with respect to actual part properties achieved. Part properties are dependent on a variety of influencing factors and therefore, actual part properties achieved by the user may deviate from the information stated herein. This document does not on its own represent a sufficient basis for any part design, neither does it provide any agreement or guarantee about the specific properties of a material or part or the suitability of a material or a part for a specific application.

This powder has not been developed, tested or certified as a medical device according to Directive 93/42/EEC (MDD) or Regulation (EU) 2017/745 (MDR) and is not intended to be used as a medical device, in particular for the purposes specified in Art. 2 No. 1 MDR. Insofar as you intend to use the powder as raw material for the manufacture of pharmaceutical products or medical devices (e.g. as raw material which as a material must meet the requirements of Annex 1, Chapter II MDR), the responsibility and liability for all analyses, tests, evaluations, procedures, risk assessments, conformity assessments, approval and certification procedures as well as for all other official and regulatory measures required for this purpose shall lie solely with you both with regard to the pharmaceutical product and/or medical device manufactured by you and with regard to the properties, suitability, testing, evaluation, risk assessment, other requirements for use of the powder as raw material. This also applies to applications with food contact. In this respect, the limitations of liability pursuant to our General Terms and Conditions and the system sales or material contracts shall apply.

Status 07/2022

EOS is certified according to ISO 9001. EOS® and DMLS® are registered trademarks of EOS GmbH Electrical Optical Systems in some countries. For more information visit [www.eos.info/trademarks](http://www.eos.info/trademarks).

